



Perle<sup>TM</sup>  
By GC Aesthetics®

Regain **your confidence**  
in complete safety.





# The next generation of GCA Breast Implants

The decision to have reconstructive surgery is a difficult one, and an option that you may or may not take. Many factors should be taken into consideration, such as how you feel physically and emotionally, and how you feel about your body. However, if you do decide that reconstruction is for you, one thing is certain - safety will be at the front of your mind.

## **That's where PERLE comes in.**

A novel Round Breast Implant with (R)evolutionary BioQ™- Surface technology and highly cohesive Emunomic™ Breast Tissue Dynamic Gel.

## **Manufactured by GC Aesthetics®**

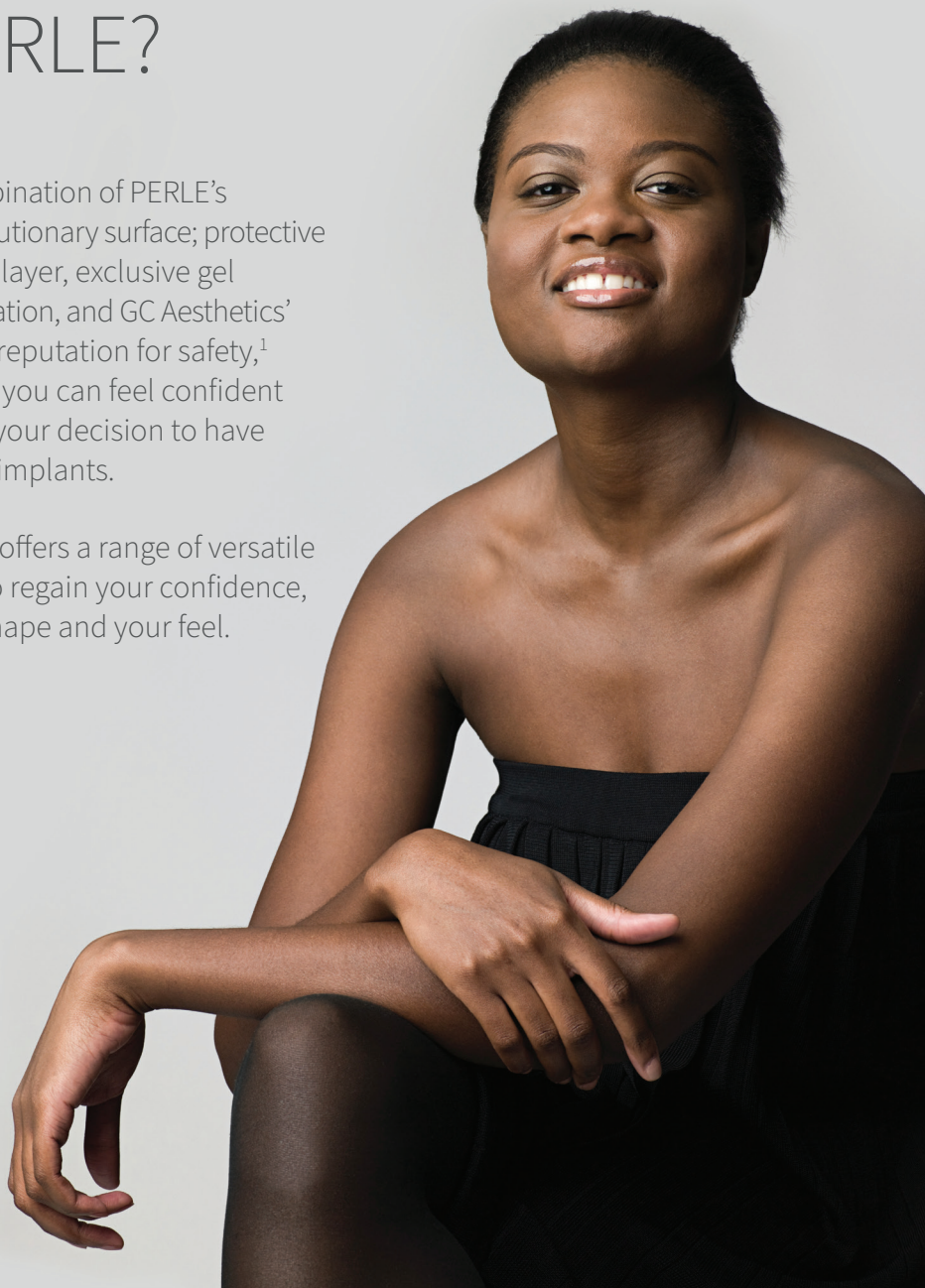
Crafted with 40 years of experience and backed by global reputation for long-term safety, PERLE can help rebuild your confidence and your shape.



# Why choose PERLE?

A combination of PERLE's (R)evolutionary surface; protective barrier layer, exclusive gel formulation, and GC Aesthetics' global reputation for safety,<sup>1</sup> means you can feel confident about your decision to have breast implants.

PERLE offers a range of versatile sizes to regain your confidence, your shape and your feel.





# The benefits of PERLE



Safety



Natural look



Empowerment

PERLE's BioQ-Surface is designed for optimal harmonisation with tissue morphology. Its surface features<sup>1</sup> have been associated with easier placement and incisions and may potentially lower the risk of post-surgery complications.<sup>3,4,5</sup>

PERLE is equipped with extremely elastic properties that perform to a high standard, which enhances the integrity of the shell, and ensures fracture resistance.<sup>1</sup>

In addition, PERLE includes a protective GCA 360 Barrier Layer technology that greatly inhibits silicone gel diffusion<sup>1</sup> minimising the potential for capsular contracture.<sup>6,7,8</sup>

Made with an exclusive formulation from GC Aesthetics, the 6th generation gel used for PERLE implants is highly cohesive,<sup>1</sup> virtually unbreakable, highly re-formable, gives projection, fullness and firmness to greatly emulate breast tissue and can create natural contours, standing up or lying down.<sup>9</sup>

What's more, PERLE implants are 100% filled, which may reduce the potential for wrinkling.<sup>2</sup>

“Reconstruction was a natural part of the surgery for me – it was the final step of the journey.<sup>10</sup>”

*Sara, 53.*



# GC Aesthetics is committed to caring for you throughout your journey

As a global medical device company with 40 years of cumulative experience, we are focused on aesthetic surgery and patient support. GC Aesthetics has a record of proven safety and clinical data.

We're proud to offer personal and ongoing support in your journey, providing a complete service for pre-surgery, surgery and post-surgery.

## Pre-Surgery

Eve 4.0™ is our digital platform with 4D simulation offering you the opportunity to see how you could look after surgery in real time.

## Post-Surgery

Noa™ is our range of medical-grade compression garments designed to give you the support and comfort to achieve optimum results and a faster recovery.

## GCA Comfort Plus Warranty™

Our comprehensive lifetime warranty, offered against all our GCA breast implants, features:

- Free of charge replacement of the implants in the event of rupture and capsular contracture (Grade III/IV on the Baker Scale)
- Free of charge replacement of implants in the event of a BIA-ALCL clinically diagnosed by surgeons or other medically qualified professionals and up to 3,000USD reimbursement of patient expenses for re-operation.



To learn more about our warranty, visit:  
[www.gcaesthetics.com/comfort-plus-warranty](http://www.gcaesthetics.com/comfort-plus-warranty)

# Glossary

## Capsular Contracture

A hardening of the tissue surrounding the breast after breast augmentation.

## Fracture Resistance

The ability of the implant to not be affected by cracking or breakage when stretched.

## Silicone Gel Diffusion

When silicone gel leaks or “bleeds” or “diffuses” through the implant shell.

## High Cohesion

The state of the silicone gel to unite or stick together.

## Wrinkling

Wrinkling of the implant that can be felt or seen through the skin.







**GC Aesthetics®**  
A Confident Choice for Life



Global Consolidated Aesthetics Limited, registered in Ireland with number 450181. Registered office: Suite 601, Q House, Furze Road, Sandyford Industrial Estate, Dublin 18, Ireland.  
© 2020 GC Aesthetics® A50-246.

GC Aesthetics® is a registered trademark of Global Consolidated Aesthetics Limited.

For more information about our products please visit:  
[www.gcaesthetics.com](http://www.gcaesthetics.com) or  
email: [info@gcaesthetics.com](mailto:info@gcaesthetics.com)



References:

1. Internal Data, GC Aesthetics 2020.
  2. Bradley Calobrace, M., Schwartz, M.R., Zeidler, K.R., Pittman, T.A., Cohen, R., and Grant Stevens, W. Long-Term Safety of Textured and Smooth Breast Implants. *Aesth Surg J.* 2018; 38: 38 – 48.
  3. Munoz et al (2019). Breast Implant Surfaces and Their Impact on Current Practices: Where We Are Now and Where Are We Going?, *PRS Global Open*; 2019: 22466.
  4. Ahn, C.Y., Ko, C.Y., Wagar, E.A., Wong, R.S., and Shaw, W.W. Clinical Significance of Intracapsular Fluid in Patients' Breast Implants. *Ann Plast Surg.* 1995; 35: 455 – 7.
  5. Jones et al (2018). The Functional Influence of Breast Implant Outer Shell Morphology on Bacterial Attachment and Growth, *Plastic and Reconstructive Surgery*; Oct 2018 - Volume 142(4): 837-849.
  6. Caffee HH. The influence of silicone bleed on capsule contracture. *Ann Plast Surg.* 1986;17:284–287.
  7. Moyer et al (2012) The Effect of Silicone Gel Bleed on Capsular Contracture: A Generational Study *Plastic and Reconstructive Surgery* 130(4):793-800.
  8. Barr S & Bayat A. Breast implant surface development: perspectives on development and manufacture. *Aesth Surg J.* 2011; 31: 56-67.
  9. Internal Data, GC Aesthetics, 2020 MRI Courtesy of Dr. Adrian Richards.
  10. Quote from a patient who has used GCA Breast Implants.
- Pictures in this leaflet are models used for promotional purposes.